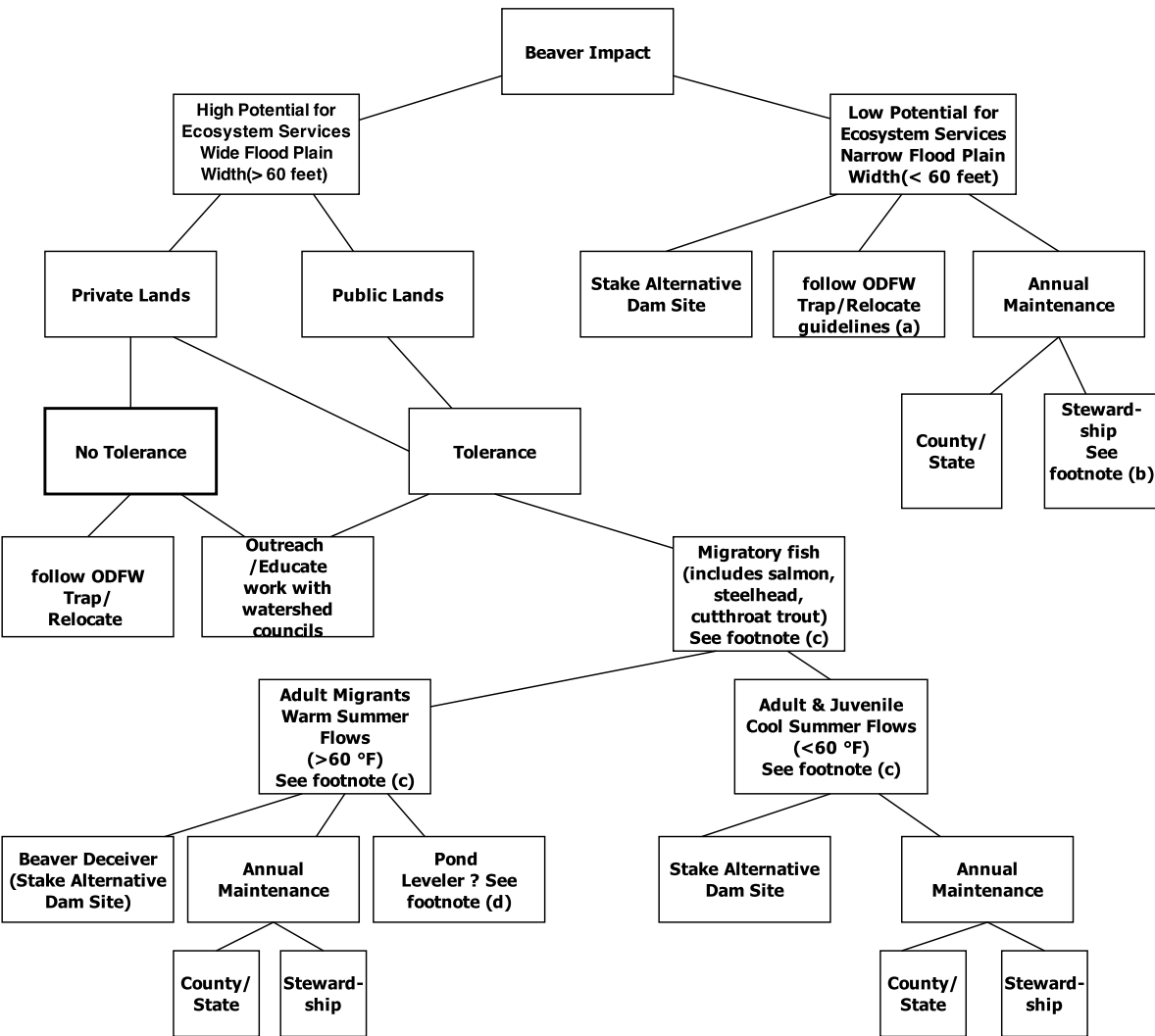


BEAVER MITIGATION DECISION FLOW CHART
 © Steve Trask , Biosurveys LLC. 541-487-4338
 March 2014



(a). ODFW has information on relocating beaver: http://www.dfw.state.or.us/wildlife/living_with/docs/Guidelines_for_Relocation_of_Beaver_in_Oregon.pdf.

(b). Develop a stewardship maintenance relationship with landowner neighbors, volunteers, or interest groups.

(c). Contact your local watershed council, local ODFW fish division or ODFW NW Regional office in Corvallis (541-757-4186) for information about fish distribution and stream temperatures in July-Sept to determine appropriate fix.

(d). Pond levelers cause passage concerns for fish. It is important that the pond leveler should only pass base summer flows and should allow for spill-over or end-run flow during higher flows. Must discuss fish passage waiver with ODFW; proceed only if grant fish passage exemption.